

Abbey Pumping Station

Access Statement



Abbey Pumping Station

Leicester's Industrial Museum



Leicester
Museums
& Galleries

This access statement does not contain personal opinions as to our suitability for those with disabilities, but aims to accurately describe the facilities and services that we offer all our visitors.

Introduction

The collections of Abbey Pumping Station comprise industrial, technological, and scientific items relating to Leicester. The building houses four working examples of Woolf compound rotative beam engines made by Gimson & Co. These can be seen working at selected events.

The extensive grounds and ground floor are accessible for wheelchair users. In addition, the Lower Beam Engine House and Switch Room are accessible via platform lift. The museum is available for private hire and is a unique and interesting alternative wedding venue.

We look forward to welcoming you. If you have any queries or require assistance, please telephone 0116 299 5111 or email aps@leicester.gov.uk

Pre-Arrival

- Opening Times: Daily: 11.00am - 4.30pm 1st February to 31st October
- Closed: 1st November to 31st January except for special events (please see our website for details)
- Admission is free except for special events
- Abbey Pumping Station is located north of the city centre. There is no parking on site at Abbey Pumping Station, but paid parking is available at the neighbouring National Space Centre.

- For full details and maps of how to reach us please see the directions section of our website, alternatively you can plan your journey by car or public transport using www.transportdirect.info; simply enter your postcode and ours, which is LE4 5PX to get directions.
- The nearest railway station is 2.7 miles away on London Road. The numbers 54 & 54A leave from Charles Street and will bring you to Abbey Lane; alternatively, taxis are available at the station. If you require an accessible taxi you can book this in advance on 0116 251 5105
- Outer city centre circular route number 40 clockwise/anti clockwise (Not Sundays) stops at the Thurcaston Road/Abbey Lane junction
- 'Skylink' service from Leicester to Derby drops off and picks up at the junction of Corporation Road and Abbey Lane
- Birstall Park and Ride is located adjacent to the A46/A6 junction. Buses leave every 15 minutes and arrive at the National Space Centre approx. 9 minutes later.
- For more details including local bus information please visit [Google Maps](#). To plan your journey to Leicester please visit [Leicester travel pages](#).

Car Parking & Arrival

- Abbey Pumping Station Museum does not have onsite parking. However, car parking is available at the adjacent National Space Centre and is a very short walk to the Abbey Pumping Station entrance
- Pathways within Abbey Pumping Station grounds are paved and suitable for wheelchairs
- The pathway to the main entrance comprises historical paving slabs which are uneven in places



Abbey Pumping Station Grounds

Main Entrance & Reception

- The main entrance and reception is on the ground floor. The entrance doors automatic and measure 60inches/152cm wide.
- There are steps at the front of the building. However, these are only used on special event days and during weddings; there is a platform lift serving the same area.
- The floor area in reception is flat and wheelchair accessible
- The reception and counter area is used for information and shop purchases. The desk is open with glass screens and has a low area suitable for wheelchair uses. On event days there is a complimentary ticket policy for a carer. A wheelchair is available on loan free of charge.



Entrance Doorway



Reception

Attractions & Displays

- The main exhibition galleries are situated on the ground floor. There are no steps and it is accessible for wheelchair users. It takes approximately 30 minutes to view.
- The galleries are free-flowing and generally uncrowded. However, on event days they can become very busy
- The galleries are made up of exhibition panels and cases, freestanding & interactive exhibits and room sets.
- There are video and audio transcripts which cause a degree of background noise
- The text is variable and doesn't currently meet access standards
- There are seats available within the gallery
- There is a hearing loop
- There is no audio guide



Gallery

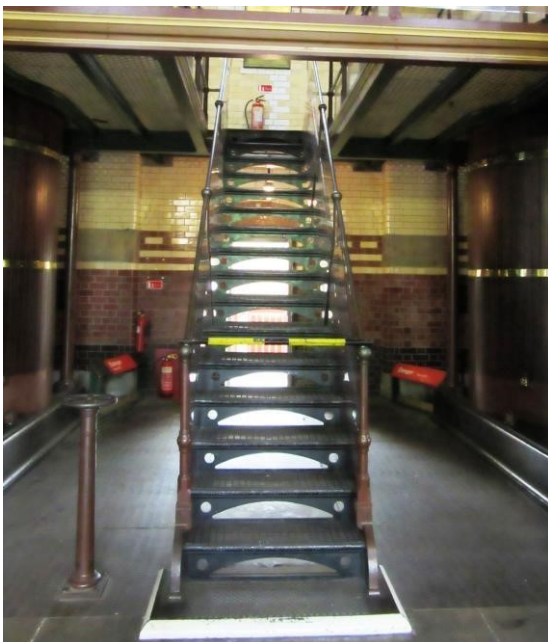
The Beam Engine House

There is a platform lift to access the Lower Beam Engine House

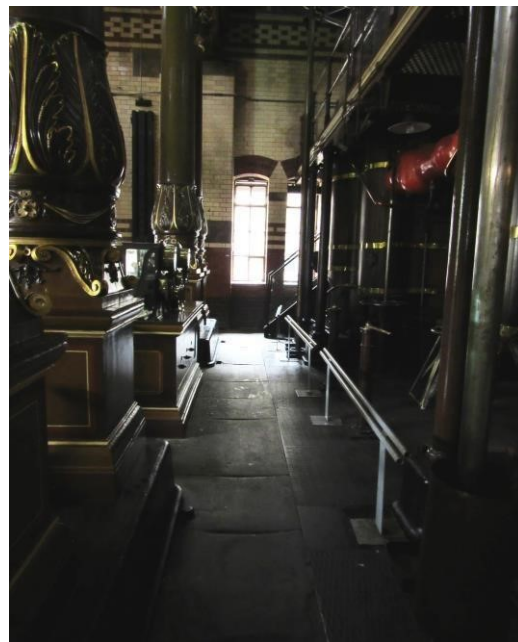
The upper floors of the Beam Engine House are only accessible by narrow, industrial metal stairways and are unsuitable for wheelchairs, pushchairs and those with mobility problems

The top floor can become excessively hot during the summer months which may adversely affect some people.

There are audio visual displays in the Lower Beam Engine House which have BSL but no subtitles



Stairs to Upper Floors



Route to Switch Room

The Switch Room

- The Switch room is used as a café on event days and is hired out for functions.
- The room is large and flat with no steps. However, the access route may be unsuitable for wider wheelchairs and mobility scooters as it is quite narrow and uneven and contains a 45° turn

The Marquee

- The Marquee is used on event days and hired out for functions
- The Marquee is fully accessible with double doors and a wide access route



The Basement

- Our 'Ghostly Engineer' event takes place in the basement. However, this area is inaccessible to wheelchairs or those with mobility problems due to both steep and spiral staircases.

The Main Shed

- The main museum shed is located in the grounds. It is used on event days for a variety of purposes and is flat and accessible for wheelchairs/pushchairs. However, it can become very crowded during popular events.

The Workshop

- The workshop is only used on event days for demonstrations. These are viewed from the outside making it accessible to all.

Public Toilets

- Abbey Pumping Station has a toilet block situated in the range opposite the museum galleries. All toilets are on ground level. There is an accessible toilet with a wide sliding door. There are also a ladies and gents, but these are situated along a narrow corridor with narrow doorways.
- The accessible toilet has a twist lock, a grab rail, and an emergency alarm.
- The sink in the accessible toilet is fitted with a lever tap, mirror, and hand drier.
- A baby change station is also situated in the accessible toilet at an appropriate height for all users

Additional information

Assistance dogs are welcome, and water can be provided upon request. ²selected staff have received disability training We have a wheelchair available for use.

Contact Information

Address: Abbey Pumping Station Museum, Corporation Road, Leicester, LE4 5PX

Telephone: 0116 299 5111

Email: museums@leicester.gov.uk